



Oak Hill Road, Romford, RM4

BUTLER  STAG



Bishops Brow is a detached spacious three bedroom property set in a great position in the village of Stapleford Abbots.



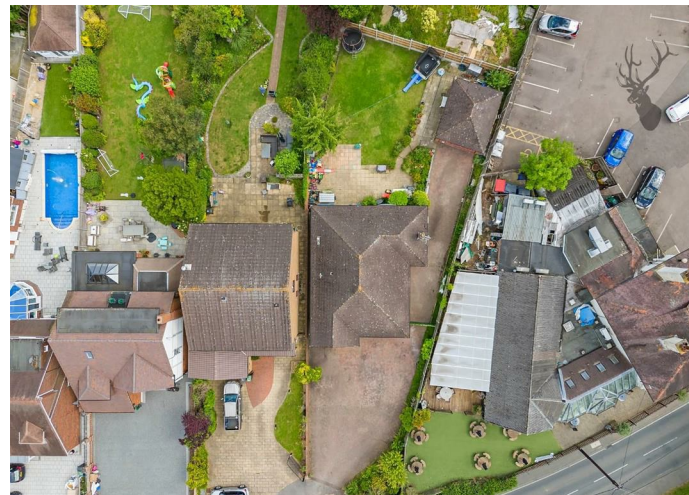
Freehold

- Detached Bungalow
- Three Bedrooms
- Off Street Parking/Potential To Extend (stp)
- Detached Garage
- 114' North East Facing Garden
- Large Summer House

Offering spacious living accommodation, the property comprises of an inviting entrance hall, a spacious bright and airy living room, a kitchen/breakfast area with doors leading onto the garden, three bedrooms and a family bathroom

Externally the property enjoys a north east facing garden as well as a patio which leads to the well maintained lawn.

Bishops Brow is situated on a sought after road in Stapleford Abbots on the outskirts of the popular village of Havering-Atte-Bower. The village shop is just a few minutes away, The Royal Oak public house is a 30 second walk away also. Theydon Bois village and Chigwell are a short drive for access to a Central Line Station. There is also good access to the A12 and the M25.





Oak Hill Road

Approx. Gross Internal Area 150.2 sq. metres (1616.7 sq. feet)

BUTLER & STAG



Measurements are approximate and for illustration purposes only. While we do not doubt the accuracy and completeness, we advise you conduct a careful independent assessment of the property to determine monetary value
© @modephotouk www.modephoto.co.uk

BUTLER & STAG

☎ 01992 667666

🏠 4 Forest Drive, Theydon Bois, Essex, CM16 7EY

✉ theydon@butlerandstag.com

www.butlerandstag.uk

IMPORTANT NOTICE - These particulars have been prepared in good faith and they are not intended to constitute part of an offer or contract. We have not performed a structural survey on this property and the services, appliances and specific fittings have not been tested. All photographs, measurements, floor plans and distances referred to are given as a guide and should not be relied upon.